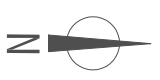
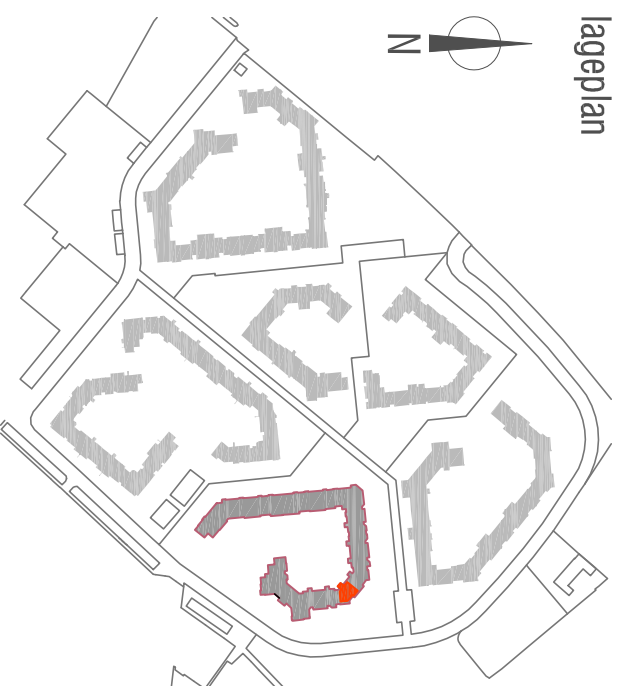
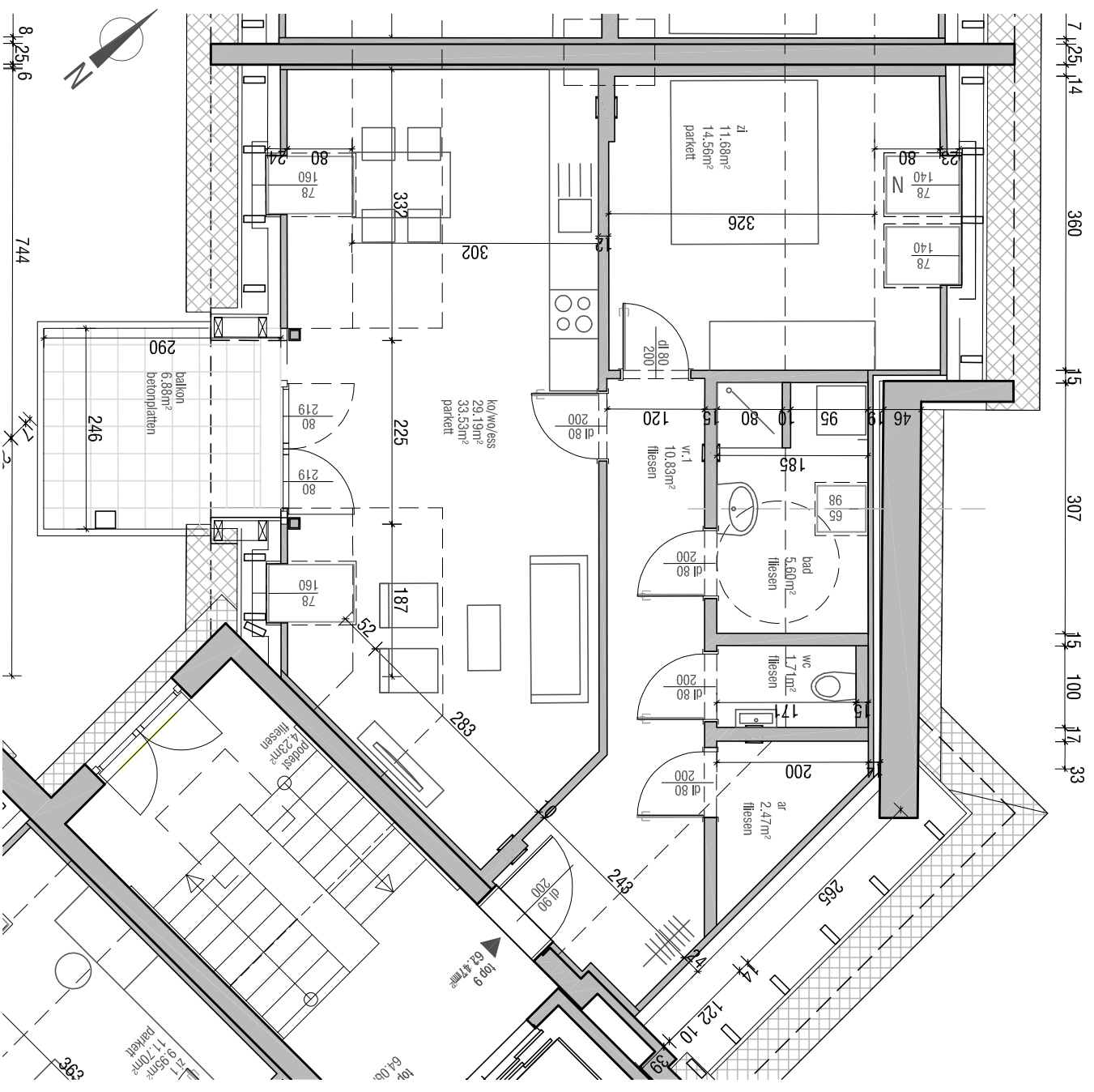
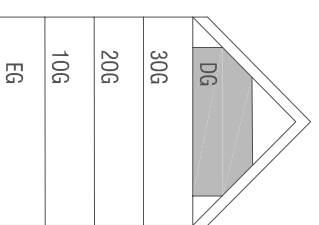


ALBERT SCHÖPF STRASSE 50 top 9  
 wohnnutzfläche (bis 1,5m) 61,47 m<sup>2</sup>  
 tatsächl. bodenfläche 68,70 m<sup>2</sup>  
 balkon 6,88 m<sup>2</sup>

lageplan



schematischer schnitt



grundriss m 1:75

$\frac{78}{140}$  N = notausstiegfenster