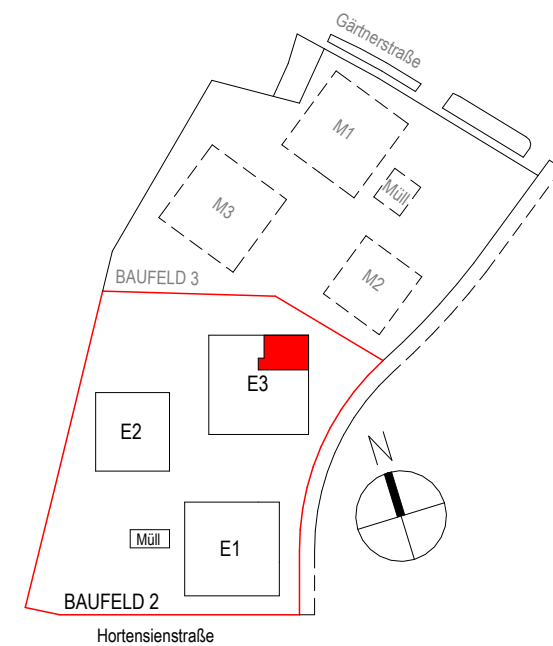
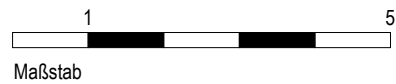
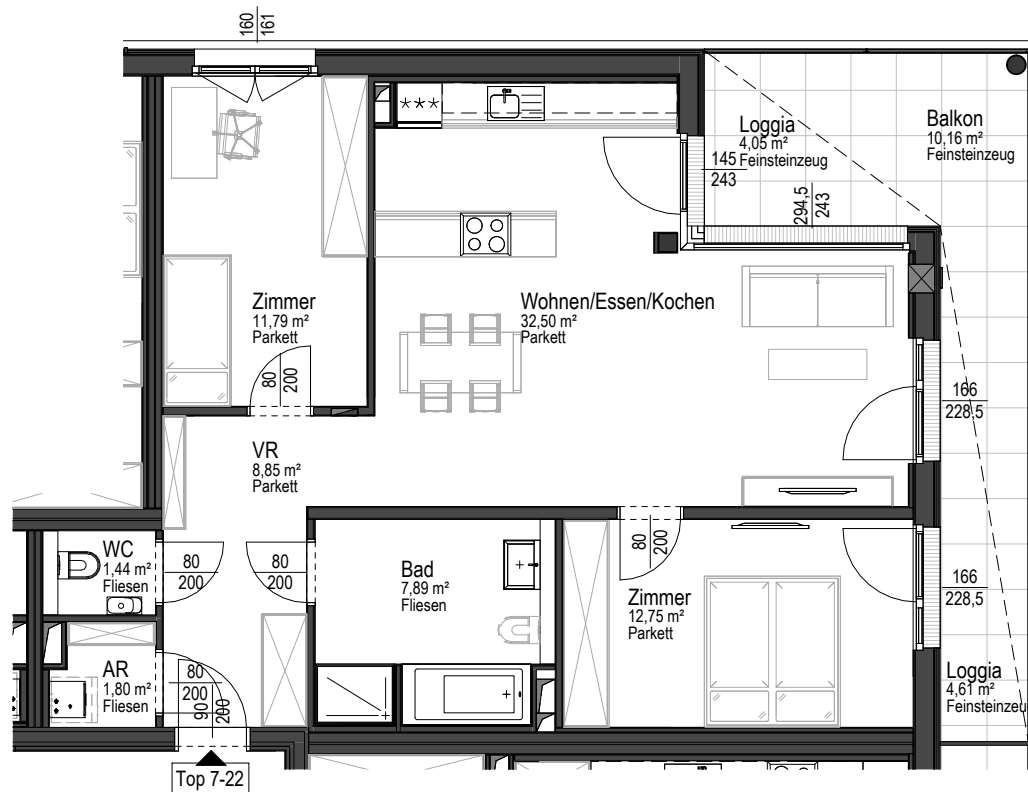
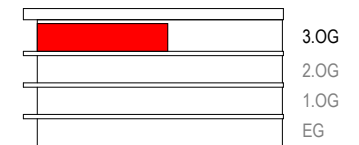


Baufeld 2 | Eigentum
3.OG

TOP 7-22 (3 Zimmer)

| | |
|----------------|----------------------|
| Wohnnutzfläche | 77,02 m ² |
| Loggia | 8,66 m ² |
| Balkon | 10,16 m ² |
| Kellerabteil | 6,53 m ² |



ÜBERSICHTSPLAN