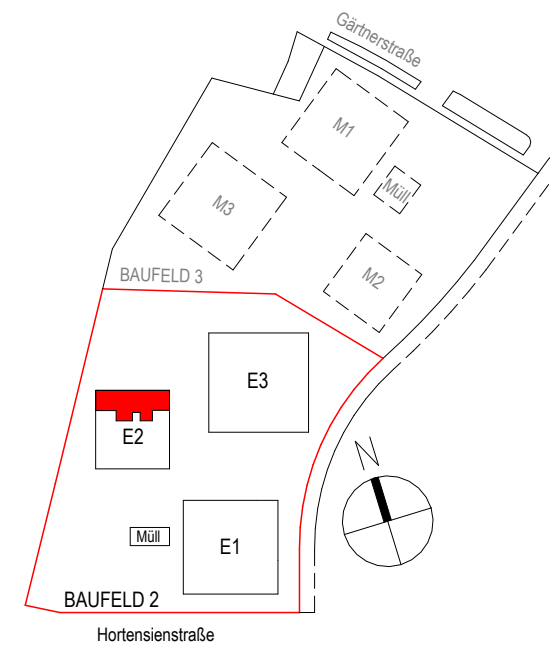
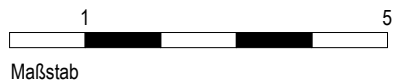
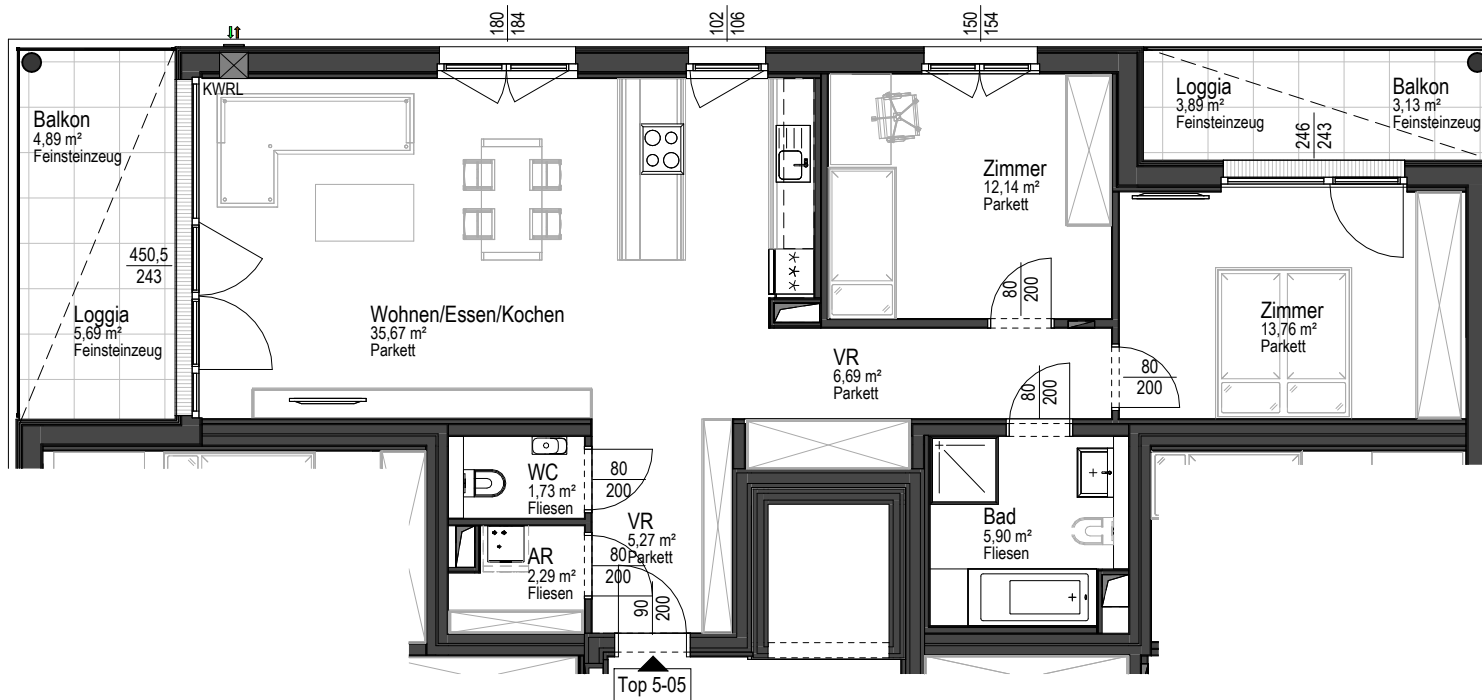
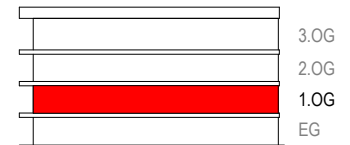


Baufeld 2 | Eigentum
1.0G

TOP 5-05 (3 Zimmer)

| | |
|----------------|----------------------|
| Wohnnutzfläche | 83,46 m ² |
| Loggia | 5,69 m ² |
| Balkon | 4,89 m ² |
| Loggia | 3,89 m ² |
| Balkon | 3,13 m ² |
| Kellerabteil | 5,60 m ² |



ÜBERSICHTSPLAN